

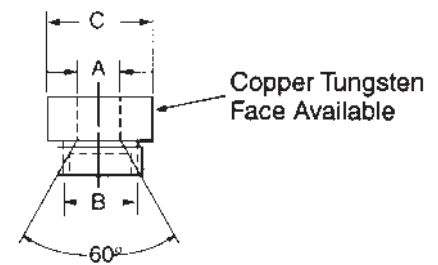
**METRIC NUT ELECTRODES**

TUFFALOY now stocks the head/pin style welding system components that adds to your selection for stud and nut welding needs. From our standard style to our Arctic, that produces higher quality welds and longer life, you can select the product that best meets your needs.

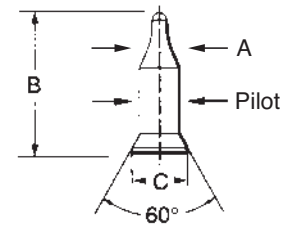
**Heads** are made from RWMA class 2 material that are an optimal cost consumable. Class 3 and 10W are available for longer life. With a concave seat the pin locates in the center of assembly when air is applied to the system. This gives you a repeatable location for automated nut feeders to introduce the nut to the environment.

**Pins** have a nonconductive surface on a steel matrix that gives longer life in a repetitive motion environment. With the threaded head securing the pin in place it makes it easy to replace the pin to meet your requirements. TUFFALOY can design pins for special applications.

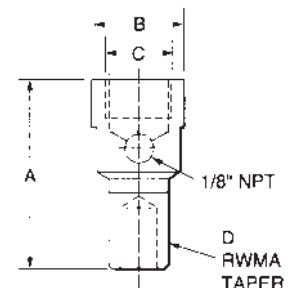
HEADS					
Part Number	Hole Dia.	A Pin Size	B Thread	C Dia.	Copper-Tungsten Faced Heads
175-8004	.197	4mm	M18	1.0	175-8004-10W
175-8005	.236	5mm			175-8005-10W
175-8006	.276	6mm			175-8006-10W
175-8007	.315	7mm			175-8007-10W
175-8008	.354	8mm			175-8008-10W
175-8009	.394	9mm			175-8009-10W
175-8010	.432	10mm	M22	1.125"	175-8010-10W
175-8011	.472	11mm			175-8011-10W
175-8012	.512	12mm			175-8012-10W
175-8013	.551	13mm			175-8013-10W
175-8014	.588	14mm	M26	1.250"	175-8014-10W



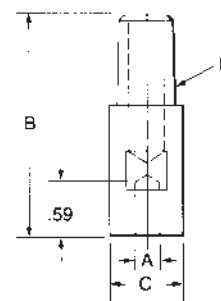
PINS				
Part Number	A Nut	B OAL	C Base	Pilot Dia.
195-3004	4mm	1.12"	12mm	.185
195-3005	5mm	1.17"		.224
195-3006	6mm	1.23"		.264
195-3007	7mm	1.24"		.303
195-3008	8mm	1.25"		.340
195-3009	9mm	1.19"		.380
195-3010	10mm	1.37"	16mm	.422
195-3011	11mm	1.38"		.458
195-3012	12mm	1.40"		.500
195-3013	13mm	1.37"		.539
195-3014	14mm	1.50"	.815	.580
195-3015	15mm	1.52"	.815	.620



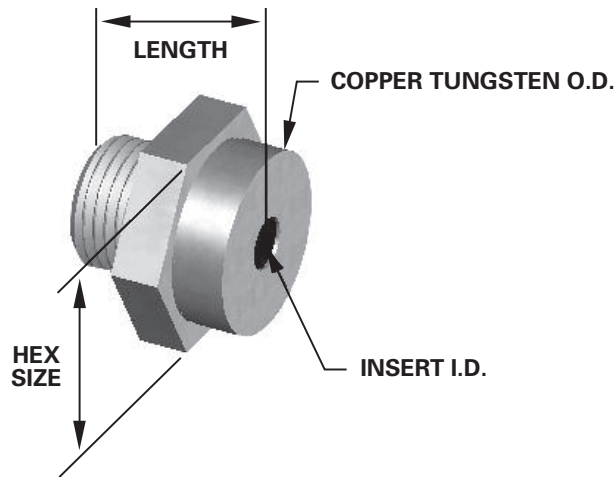
BODIES					
Description	Part Number	A OAL	B Dia.	C Thread	D Taper
TDH-25A	301-0004	1.77"	1"	18mm	#4
TDH-25C	301-0005	1.97"	1"	18mm	#5
TDH-30A	301-0015	1.97"	1.125"	22mm	#5
TDH-35A	301-0020	1.97"	1.125"	26mm	#5



UPPER ELECTRODE					
Description	Part Number	A ID	B OAL	C Dia.	D Taper
TNFD 16-M5-16-3	186-0101	5mm	2.36"	.625"	5RW
TNFD 20-M6-16-3	186-0102	6mm		.75"	
TNFD 20-M8-16-3	186-0103	7.5mm		.75"	
TNFD 20-M10-16-3	186-0104	10mm		.75"	
TNFD 20-M12-16-3	186-0105	12mm		.75"	



**GH SERIES NUT WELDING HEADS**



	175-GH-2 Series	175-GH-3 Series	175-GH-4 Series	Insert I.D.	175-GH-2 Series	175-GH-3 Series	175-GH-4 Series	Insert I.D.
Length	0.875	1.000	1.125		0.875	1.000	1.125	
Tungsten OD	0.875	1.250	1.500		0.875	1.250	1.500	
Hex Size	1.000	1.375	1.500		1.000	1.375	1.500	
	175-GH-2-188	175-GH-3-188		0.188	175-GH-2-368			0.368
	175-GH-2-193	175-GH-3-193		0.193	175-GH-2-372	175-GH-3-372		0.372
	175-GH-2-197			0.197		175-GH-3-392		0.392
		175-GH-3-200		0.200		175-GH-3-397		(10mm) 0.397
	175-GH-2-212			0.212		175-GH-3-412		0.412
	175-GH-2-218			0.218		175-GH-3-417		0.417
	175-GH-2-239			0.239		175-GH-3-423		0.423
	175-GH-2-240			0.240		175-GH-3-425		0.425
	175-GH-2-242	175-GH-3-242		(6mm) 0.242		175-GH-3-427		0.427
	175-GH-2-245	175-GH-3-245		0.245		175-GH-3-430		0.430
		175-GH-3-247		0.247		175-GH-3-432		0.432
	175-GH-2-250			0.250		175-GH-3-437		0.437
		175-GH-3-251		0.251		175-GH-3-445		0.445
	175-GH-2-252			0.252		175-GH-3-447		0.447
		175-GH-3-254		0.254		175-GH-3-452		0.452
	175-GH-2-258			0.258		175-GH-3-465		0.465
		175-GH-3-262		0.262		175-GH-3-467		0.467
	175-GH-2-263			0.263		175-GH-3-470		0.470
		175-GH-3-264		0.264		175-GH-3-472		0.472
	175-GH-2-272	175-GH-3-272		0.272		175-GH-3-480		(12mm) 0.480
	175-GH-2-273	175-GH-3-273		0.273		175-GH-3-504		0.504
	175-GH-2-275			0.275		175-GH-3-507		0.507
	175-GH-2-277			0.277		175-GH-3-508		0.508
	175-GH-2-280			0.280			175-GH-4-509	0.509
	175-GH-2-282			0.282		175-GH-3-512		0.512
	175-GH-2-287			0.287		175-GH-3-517		0.517
	175-GH-2-312	175-GH-3-312		0.312		175-GH-3-522		0.522
		175-GH-3-317		(8mm) 0.317		175-GH-3-538		0.538
	175-GH-2-322	175-GH-3-322		0.322		175-GH-3-542		0.542
	175-GH-2-325		175-GH-4-325	0.325		175-GH-3-547		0.547
		175-GH-3-326		0.326		175-GH-3-548		0.548
		175-GH-3-332		0.332		175-GH-3-552		0.552
		175-GH-3-337		0.337		175-GH-3-557		0.557
	175-GH-2-342			0.342		175-GH-3-587		0.587
	175-GH-2-347	175-GH-3-347		0.347		175-GH-3-592		0.592
		175-GH-3-351	175-GH-4-351	0.351		175-GH-3-632		0.632
	175-GH-2-352	175-GH-3-352		0.352		175-GH-3-656		0.656
	175-GH-2-354			0.354			175-GH-4-667	0.667
	175-GH-2-357	175-GH-3-357		0.357			175-GH-4-677	0.677
	175-GH-2-359			0.359				

